



2008-2009 GMT Quarterly Report for District (or Undistricted) **District 323 J**



GMT: **KAMLESH JAIN**

Location: **Multiple**

GMT CA: **6**

CLUBS

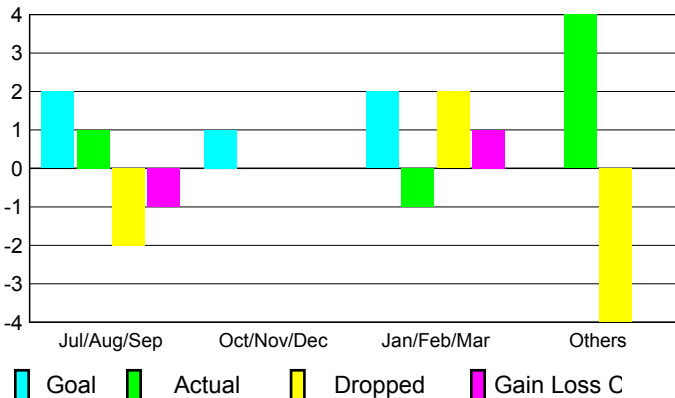
Club Results 2008-2009

Clubs 2007-2008

| Month | New Club Goal | Actual New Clubs | Actual Dropped Clubs | Gain/Loss of Clubs | Gain/Loss of Clubs |
|---------------|---------------|------------------|----------------------|--------------------|--------------------|
| Jul/Aug/Sep | 2 | 1 | -2 | -1 | 3 |
| Oct/Nov/Dec | 1 | 0 | 0 | 0 | 1 |
| Jan/Feb/Mar | 2 | -1 | 2 | 1 | 0 |
| Apr/May/June | 0 | 4 | -4 | 0 | 3 |
| Totals | 5 | 4 | -4 | 0 | 7 |

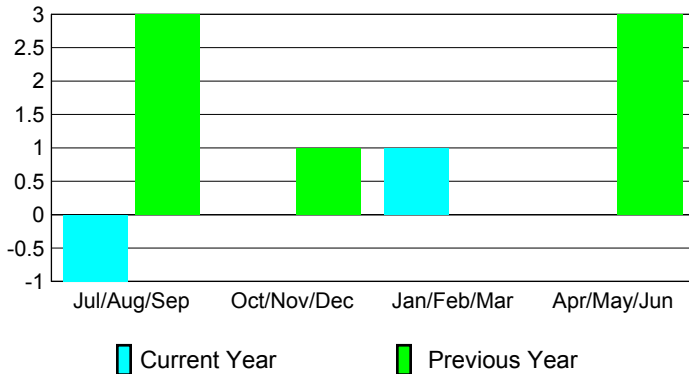
Club Results 2008-2009

Goal, New, Dropped, Gain/Loss



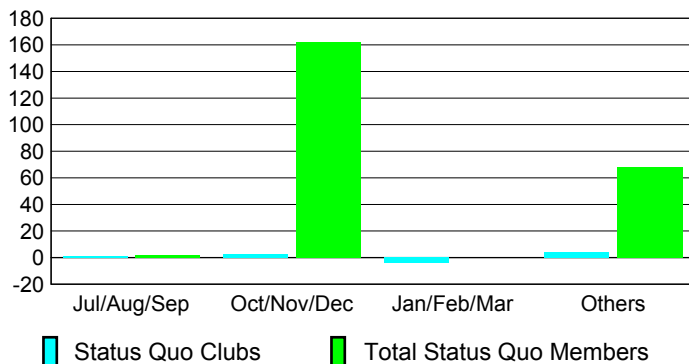
Comparison of Club Gain/Loss

Current Year Compared to the Previous Year



YTD Status Quo Clubs 2008-2009

Status Quo Clubs Compared to Status Quo Members



MEMBERSHIP

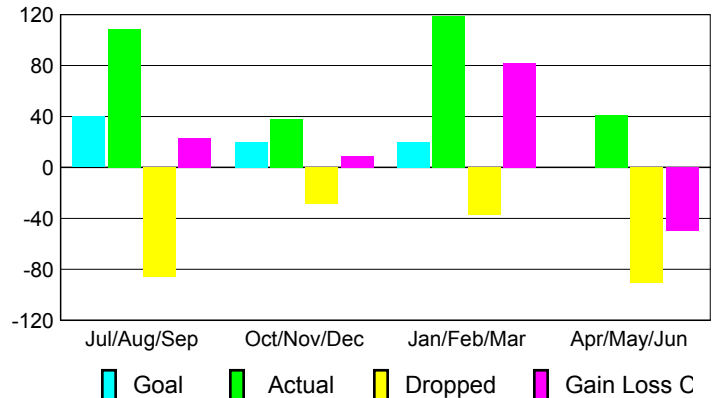
Membership Results 2008-2009

Membership 2007-2008

| Month | Net Memb Goal | Actual New Memb | Actual Dropped Memb | Gain/Loss of Memb | Gain/Loss of Memb |
|---------------|---------------|-----------------|---------------------|-------------------|-------------------|
| Jul/Aug/Sep | 40 | 109 | -86 | 23 | 91 |
| Oct/Nov/Dec | 20 | 38 | -29 | 9 | 51 |
| Jan/Feb/Mar | 20 | 119 | -37 | 82 | 69 |
| Apr/May/June | 0 | 41 | -91 | -50 | 72 |
| Totals | 80 | 307 | -243 | 64 | 283 |

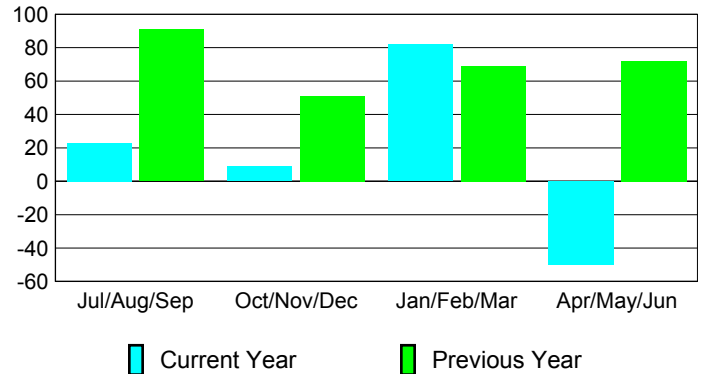
Membership Results 2008-2009

Goal, New, Dropped, Gain/Loss

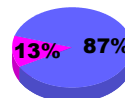


Comparison of Membership Gain/Loss

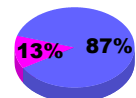
Current Year Compared to the Previous Year



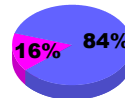
Gender Comparison 2008-2009



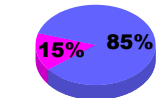
Jul/Aug/Sep



Oct/Nov/Dec



Jan/Feb/Mar



Apr/May/June

Male

Female